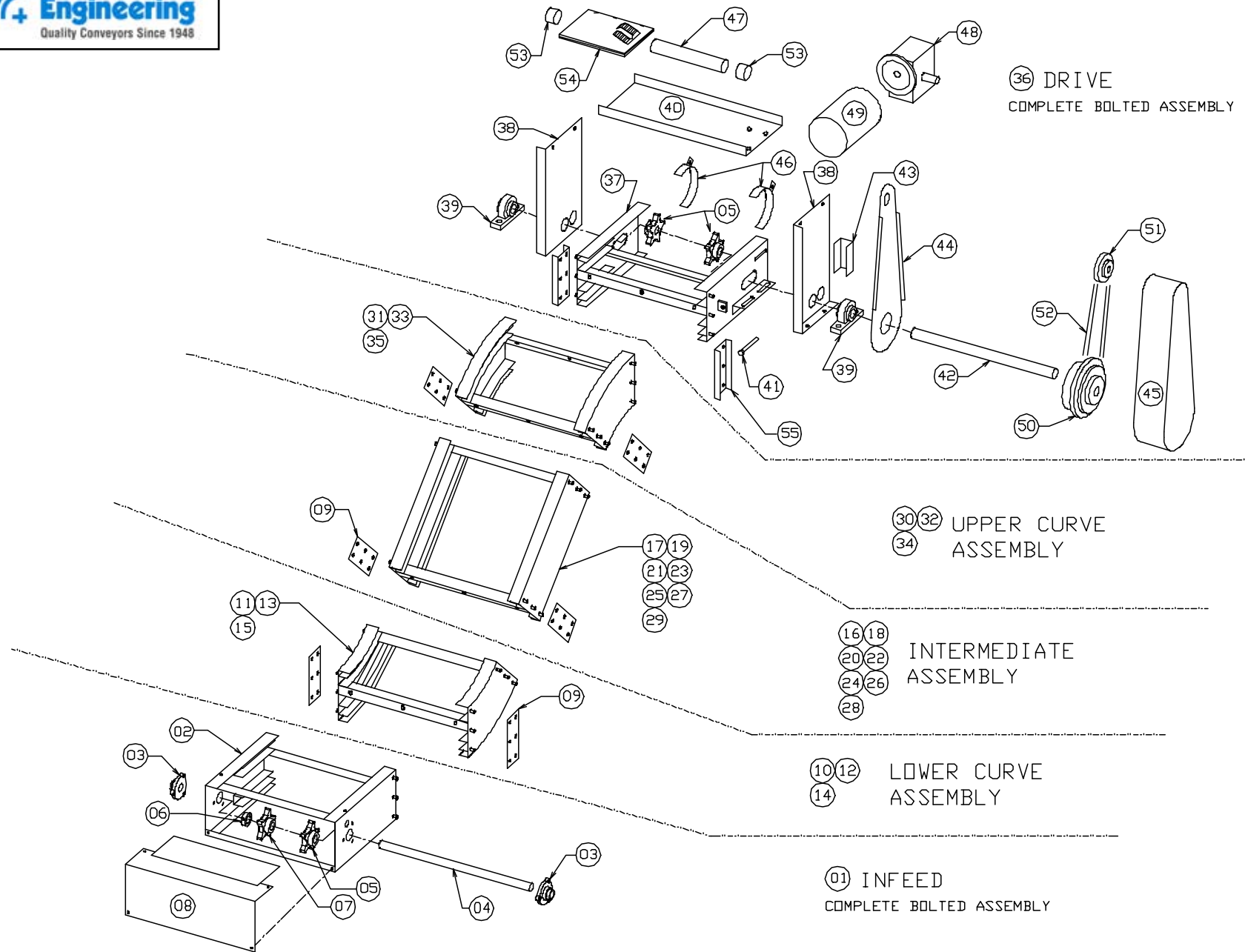


Replacement Parts List for Model # 722 and Model # 726



See next page for part numbers and descriptions

Replacement Parts List for Model # 722

PN Description

1 Infeed Section Assembly	29 120" Intermediate Weldment
2 Infeed Frame Weldment	30 30° Upper Curve Assembly
3 • 1 3/16" 3 Bolt Flange Bearing	31 30° Upper Curve Weldment
4 • Infeed Shaft (1 3/16" Dia)	32 45° Upper Curve Assembly
5 • Fixed, Infeed/ Drive Sprocket	33 45° Upper Curve Weldment
6 • Locking Collar	34 60° Upper Curve Assembly
7 • Floater, Infeed Sprocket	35 60° Upper Curve Weldment
8 Infeed Guard Assembly	36 Drive Section Assembly
9 Splice Plate	37 Drive Section Weldment
10 30° Lower Curve Assembly	38 Drive Plate Weldment
11 30° Lower Curve Weldment	39 • 1 3/16" Pillow Block Bearing
12 45° Lower Curve Assembly	40 Motor Base
13 45° Lower Curve Weldment	41 Take-up Bolt
14 60° Lower Curve Assembly	42 • Drive Shaft (1 7/16" Dia)
15 60° Lower Curve Weldment	43 • Drive Guard Bracket
16 6" Intermediate Assembly	44 Drive Guard Back
17 6" Intermediate Weldment	45 Guard Weldment
18 12" Intermediate Assembly	46 Sprocket Guard
19 12" Intermediate Weldment	47 Manual Tube
20 18" Intermediate Assembly	48 • Reducer
21 18" Intermediate Weldment	49 • Motor
22 24" Intermediate Assembly	50 • Torque Limiter
23 24" Intermediate Weldment	51 • Reducer Sprocket
24 48" Intermediate Assembly	52 • Chain
25 48" Intermediate Weldment	53 • Manual Tube Cap
26 84" Intermediate Assembly	54 Manual
27 84" Intermediate Weldment	55 Support Splice Plate
28 120" Intermediate Assembly	

- **Recommended spare parts to be stocked at your location**